

IMPORTANT SAFETY AND INSTALLATION INSTRUCTIONS

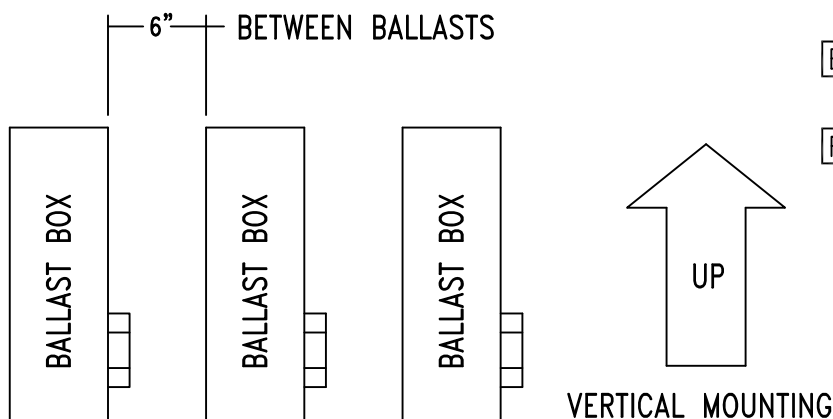
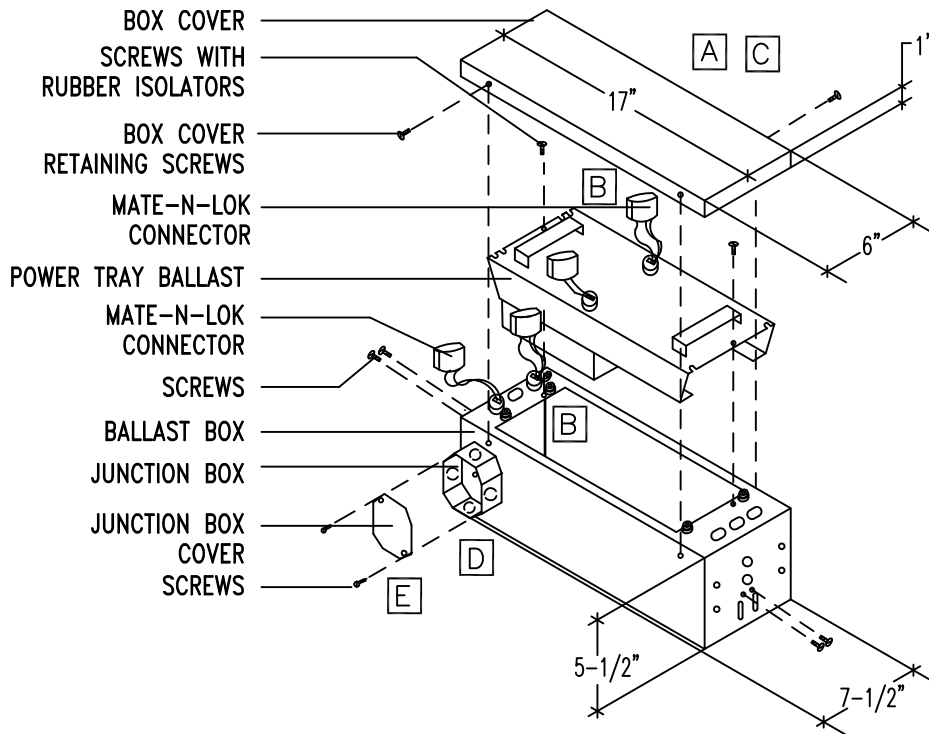
WARNING: Risk of fire and electric shock. This product is to be installed by a qualified electrician only.

CAUTION: When using electrical equipment, basic safety precautions should always be followed including the following: Read all instructions carefully before installation and save

for future use. Make sure installation and all connections are in accordance with National Electrical Code and any local regulations. To avoid possible electrical shock, be sure that power supply is turned off before installing or servicing this fixture. Servicing should be performed by qualified service personnel.

These instructions do not claim to cover all details or variations. When additional information is desired, please contact your SPI representative.

REMOTE MOUNT – P.T. TRAY/BALLAST BOX



Typical Mounting of Ballast Box
Shown – Maximum Distance Lamp to
Ballast with No. 12 Wire:

175W MH = 250' 400W MH = 120'
250W MH = 190' 250/400W HPS = 50'
Consult Factory for Additional Information.

Fixtures can be provided with Dual Voltage Ballast (120/277V) or Multi-tap Ballast and are wired for 277V. Wire supply leads to junction box as required by local codes.

For Wiring Instructions see back page.

A Remove box cover from ballast box by removing screws.

B Extend leads from Mate-N-Loks through junction box.

Insert power tray ballast end with four notches toward Mate-N-Loks. Notches must engage locator pins. Connect Mate-N-Loks. Secure using screws with rubber isolators.

C Assemble box cover to ballast box with screws.

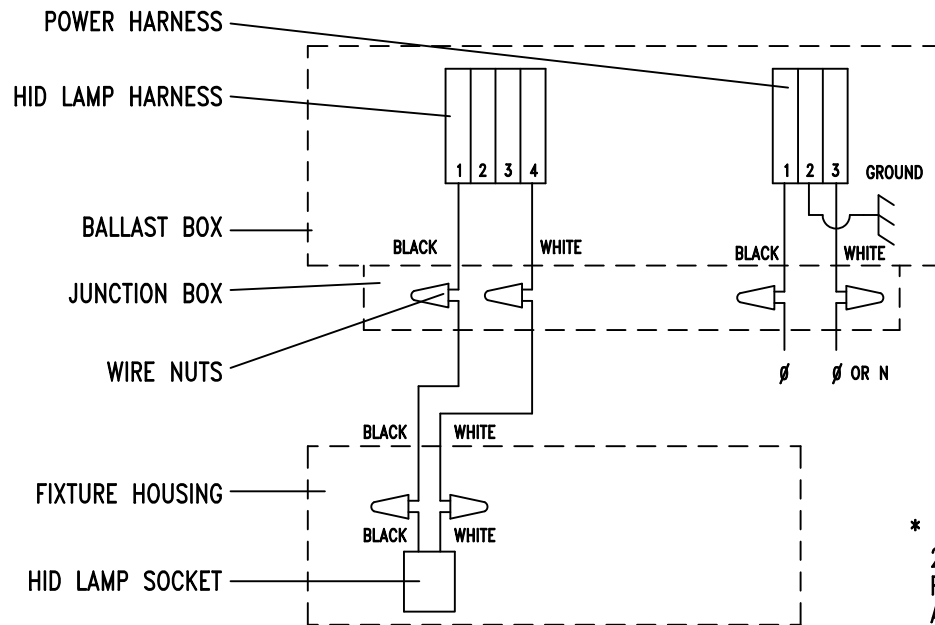
D Connect power supply and lamp leads to junction box. Voltage must correspond to power tray ballast voltage.

E Attach junction box cover to junction box with screws provided.

F CAUTION: Insure adequate ventilation is provided. Check lamp to ballast distance.

IS5289X-A

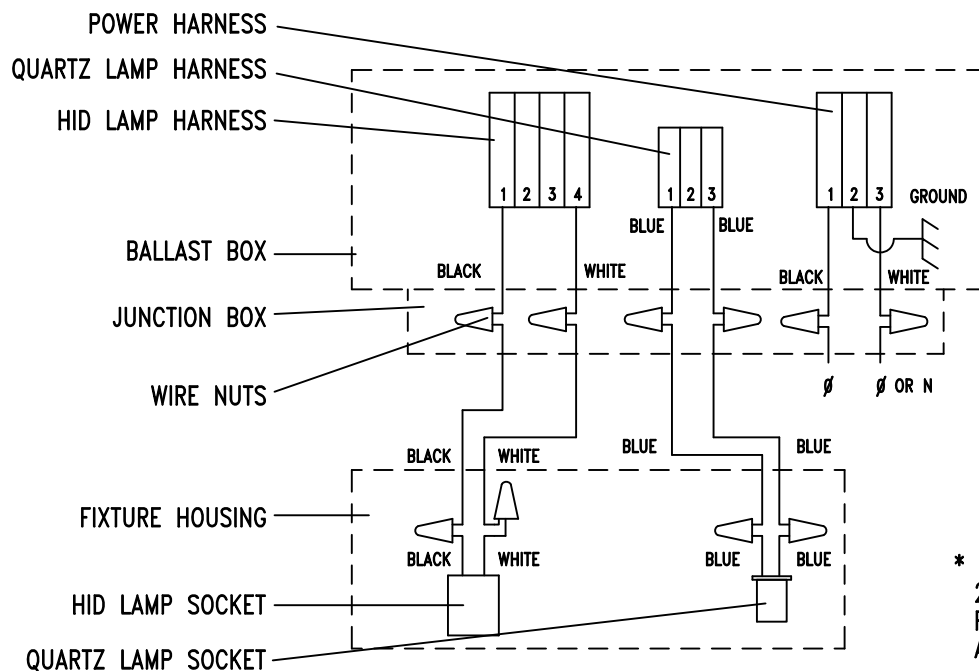
REMOTE MOUNT – P.T. TRAY/BALLAST BOX



* BALLAST TRAY FACTORY CONNECTED TO 277V. TO CHANGE VOLTAGE REMOVE LEAD FROM 277V. TAP AND RECONNECT TO APPROPRIATE VOLTAGE TAP.

WIRE M.H. OR H.P.S. FIXTURE PER THIS DIAGRAM.

WIRE M.H. OR H.P.S. FIXTURE WITH QUARTZ PER THIS DIAGRAM.



* BALLAST TRAY FACTORY CONNECTED TO 277V. TO CHANGE VOLTAGE REMOVE LEAD FROM 277V. TAP AND RECONNECT TO APPROPRIATE VOLTAGE TAP.

11/26/13
IS5289X-B